
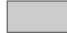

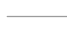


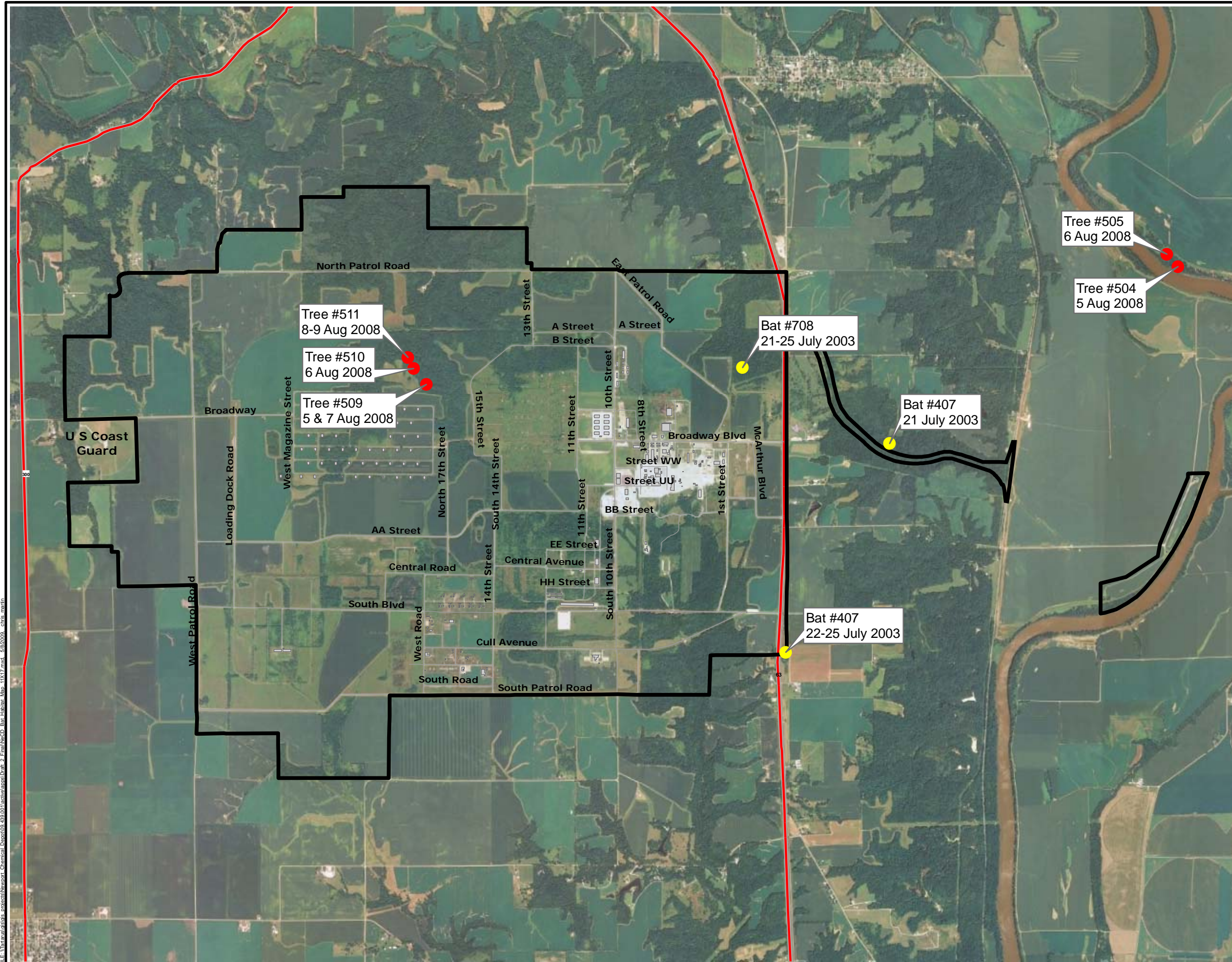


INDIANA BAT HABITAT

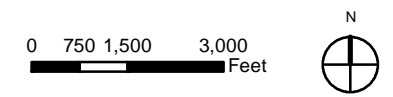
Legend

-  NeCD Boundary
-  Buildings
-  Highways
-  Roads
-  Roost Tree Location 2003
-  Roost Tree Location 2008



DRAFT

Source: Redwing Ecological Services, INC



NEWPORT CHEMICAL DEPOT REUSE MASTER PLAN

Newport Chemical Depot Reuse Authority
Vermillion County, Indiana



Matrix Design Group Inc.
Integrated Design Solutions
ECONOMICS RESEARCH ASSOCIATES - CHICAGO, ILLINOIS
BURNS & MCDONNELL - CHICAGO, ILLINOIS
GARRITY & KNISELY - BOSTON, MASSACHUSETTS

FILE: \\nrcd\projects\GIS\Newport_Chemical_Depot\09_23_09\1001\workspace\Draft_2_Final\NeCD_Bat_Habitat_Map_10x17.mxd - 6/26/2010 - chris.martin