





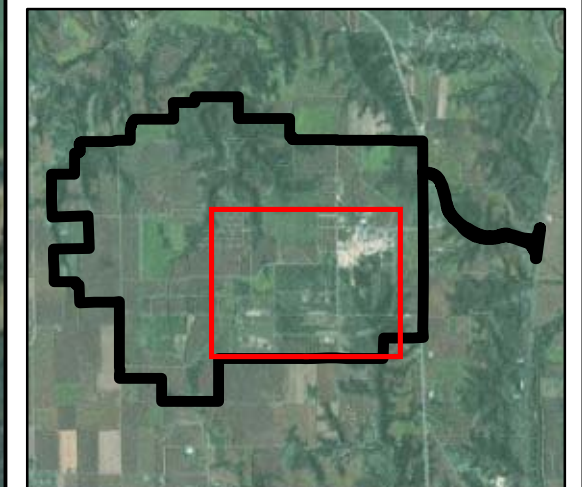


UTILITIES - SANITARY SEWER

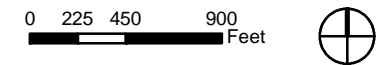
Legend

-  NeCD Boundary
-  Buildings
-  Highways
-  Roads
-  Streams
-  Sanitary Sewers

DRAFT



Sources: U.S. Army; Burns & McDonnell



**NEWPORT CHEMICAL DEPOT
REUSE MASTER PLAN**

Newport Chemical Depot Reuse Authority
Vermillion County, Indiana



Matrix Design Group Inc.
Integrated Design Solutions

ECONOMICS RESEARCH ASSOCIATES - CHICAGO, ILLINOIS
BURNS & MCDONNELL - CHICAGO, ILLINOIS
GARRITY & KNISELY - BOSTON, MASSACHUSETTS